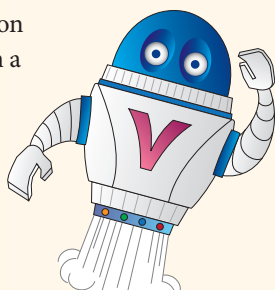


The Response to Intervention (RtI) Management Solution

Grades K-8

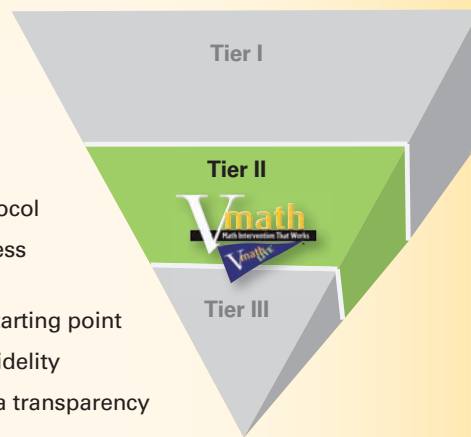
Vmath® is a Strategic Mathematics Intervention

- Blended solution of print and student-centered Web-based technology available in a modular format
- Full range of online assessments identify specific student gaps and monitor progress with real-time reporting using Quantiles®
- Explicit teacher-led instruction provides a balanced approach focused on conceptual development, computational fluency, and problem-solving skills
- Builds the critical foundation for algebra, is aligned to the National Mathematics Advisory Panel Report, and is endorsed by CASE
- VmathLive® Web-based program supports classroom instruction with built-in error analysis in a game-like environment



Tier II

- Small group
- 30-45 minutes
- Standard treatment protocol
- Monthly/biweekly progress monitoring
- Placement determines starting point
- Explicit design ensures fidelity
- Embedded real-time data transparency



Supports Technology in the Classroom



A scientific approach to mathematics measurement that provides a common scale to monitor growth.



VmathLive is a fun and motivating online technology that allows students to practice math skills and prepare for high-stakes tests. **Go to voyagerlearning.com for a complimentary 14-day trial.**



Students experience math through interactive online simulations.



Whiteboard capabilities enhance Vmath instruction.



Students compete against their peers around the world with VmathLive

For more information about VmathLive visit www.vmathlive.com

RtI Essentials:

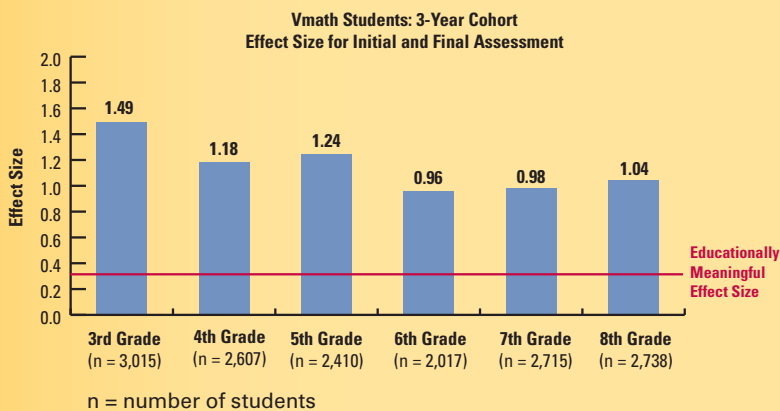
Universal Screening and Progress Monitoring

- + Data Analysis
- + Management Tools
- + Professional Development

= Results

Explicit instruction involving both teacher modeling and kids going through the steps in the models—in small groups or with the whole class or individually—seems to lead consistently to higher gains for kids.

—Russell Gersten,
Professor Emeritus
College of Education, University of Oregon;
Chairman of the Instructional Practices Committee
National Math Panel



Assessments are given at the beginning and end of *Vmath* instruction. The beginning assessment identifies weaknesses of individual struggling students and determines (along with district criteria) appropriate entry points into instruction.

Each assessment consists of 40 questions that act as indicators of understanding of skills taught in each *Vmath* module. Scores provide indicators of where students begin struggling with the material, and recommends a starting place in the instructional sequence.

By comparing scores from the initial and final assessments, teachers and coaches can document student growth and mastery throughout the course of intervention.

Effective Data Management System

The key to effective instruction is **real-time data** that **tracks student progress** throughout the year. Embedded in *Vmath* is VPORT,® Voyager's online data management system, which collects and reports student assessment data, enabling district leaders and teachers to make effective instructional decisions.

Administrators can:

- Track progress toward reaching district goals
- Identify district and school professional development needs
- Evaluate the effectiveness of the intervention

Teachers can:

- Identify student needs
- Differentiate instruction
- Monitor student progress
- Evaluate student learning

